

# FOR LEASE IN HILLSBORO, OREGON

# MAJESTIC BROOKWOOD BUSINESS PARK



FOR MARKETING PURPOSES ONLY. SUBJECT TO CHANGE.

## LOCATION:

Highway 26 & NE Brookwood Pkwy in Hillsboro, Oregon

## HIGHLIGHTS:

- Site is located just off Highway 26 at the Brookwood Pkwy interchange.
- Retail pad opportunities off Brookwood leading to the Silicon Forest.
- Intel, with its 7,000 employees, is less than a 1/4 mile from the subject site.
- Surrounding retailers include Fred Meyer, Costco, WinCo, Kohl's, Dick's Sporting Goods and Jo-Ann Fabrics.
- Located adjacent to the Hillsboro Recreation Complex, home of the Hillsboro Hops Minor League Baseball Team.

## TRAFFIC COUNTS:

Highway 26 - 64,264 ADT ('22)

NE Brookwood Pkwy - 28,504 ADT ('22)

NE Huffman St - 2,744 ADT ('22)

## DEMOGRAPHICS:

	3 MILE	5 MILE	10 MILE
Population 2022	57,368	200,326	489,140
Population Forecast 2027	60,326	209,462	511,793
Average HH Income	\$113,995	\$111,256	\$115,037
Employees	31,356	68,260	172,947

Source: Regis - SitesUSA (2023)



**ALEX MACLEAN**  
alex@cra-nw.com  
503.274.0211

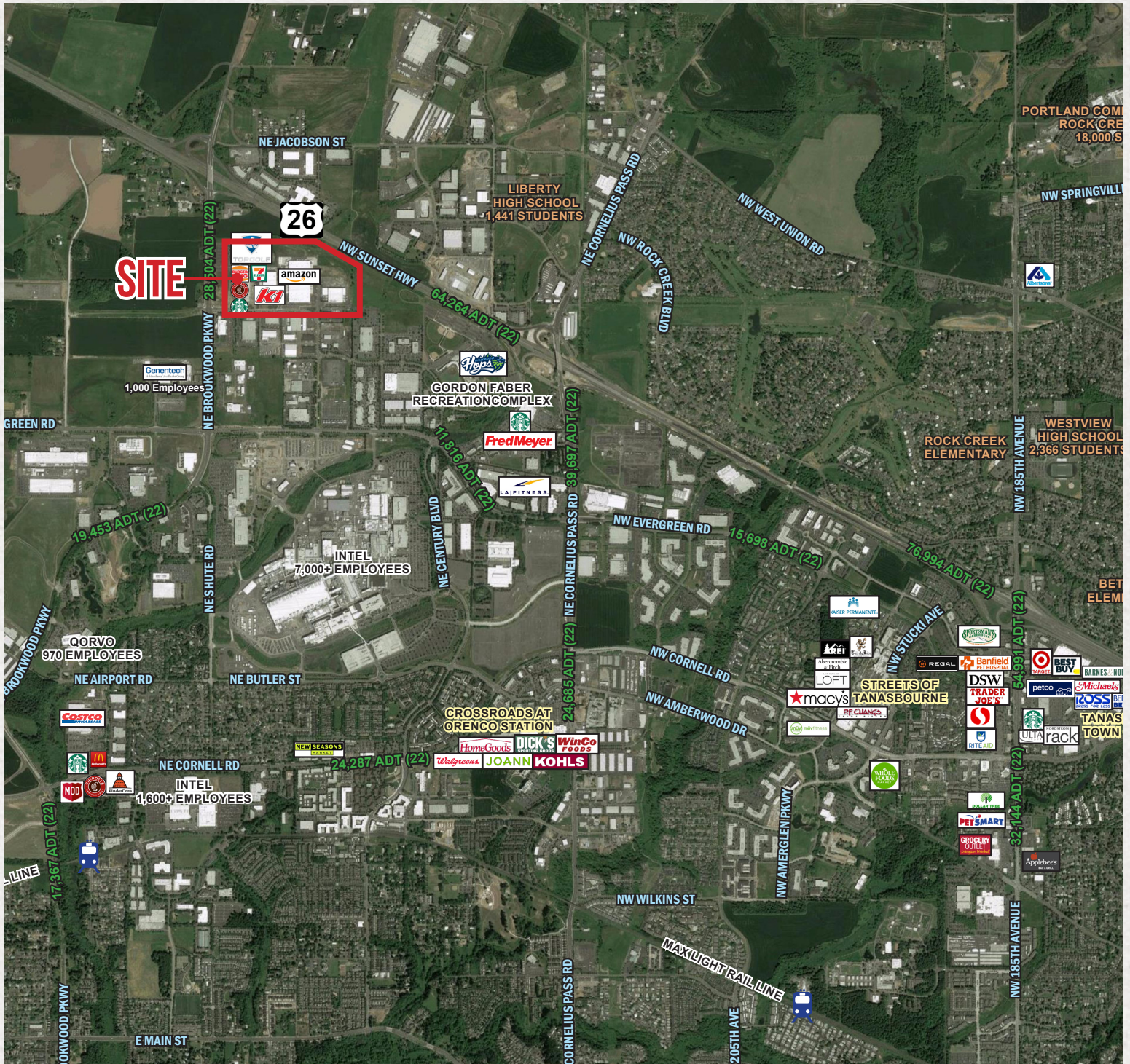
**Commercial Realty Advisors NW LLC**  
15350 SW Sequoia Pkwy, Suite 198  
Portland, Oregon 97224  
www.cra-nw.com

Licensed brokers in Oregon & Washington



# FOR LEASE IN HILLSBORO, OREGON

# MAJESTIC BROOKWOOD BUSINESS PARK



**ALEX MACLEAN**  
 alex@cra-nw.com  
 503.274.0211

**Commercial Realty Advisors NW LLC**  
 15350 SW Sequoia Pkwy, Suite 198  
 Portland, Oregon 97224  
 www.cra-nw.com  
 Licensed brokers in Oregon & Washington